

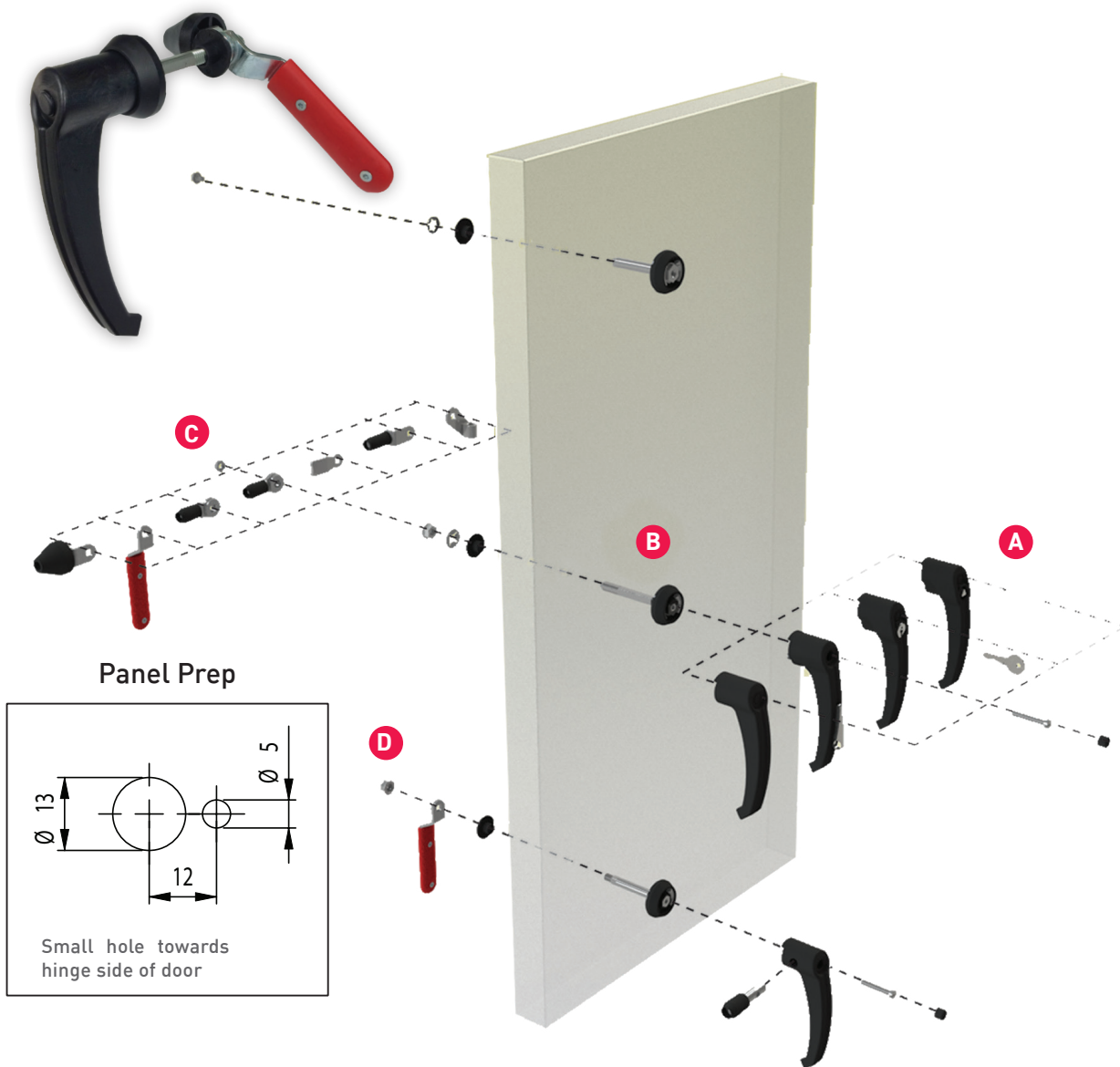


KLIMA-FLEX PRODUCT GUIDE 2.2



K1

HOW TO BUILD A KLIMA-FLEX LATCH



IN-SWING DOOR

- A** Choose a handle for an in-swing door with required grip.
- B** Choose a latching mechanism.
- C** Add an inside handle; if necessary.

OUT-SWING DOOR

- A** Choose a handle for out-swing door.
- B** Choose a latching mechanism.
- C** Add a roller cam (grip is adjustable).
- D** Add an inside handle or other accessories.

K1

HANDLES

Our innovative **Klima-Flex™** handles are available in a variety of configurations and address many of the shortcomings of traditional designs. Durable glass reinforced nylon construction provides UV stability and a thermal break. Tool operated, pad-lockable and key-locking versions are available to meet security requirements. To prevent breakage, the handles can be removed from the mechanism during shipping and installation. When partnered with other components in the **Klima-Flex™** family, these handles provide an industry leading latching solution for both in-swing and out-swing doors.



1
PAD-LOCKABLE
OUT-SWING



2
TOOL-OPERATED
IN-SWING



3
KEY-LOCKING
IN-SWING



4
NON-LOCKING
IN-SWING

KLIMA-FLEX™ SYSTEM - INSIDE AND OUTSIDE HANDLES

P/N	DESCRIPTION	LATCHING TYPE	GRIP* (X) IN MM	IMAGE
265076-02-X	In-Swing	Non-Locking	2.5, 5, 6.8, 7, 10, 14.6, 17, 21.5	4
265076-12-X	In-Swing	Key-Locking	4.5, 5, 7.5, 14.5, 23	3
265076-32-X	In-Swing	5/16 Hex Tool	5, 16, 17	2
265076-62-X	In-Swing	Pad-Lockable	5, 11.5, 14.5, 17	
+ 265076-00	Out-Swing	Non-Locking	-	5
+ 265076-10	Out-Swing	Key-Locking	-	
+ 265076-30	Out-Swing	5/16 Hex Tool	-	
265076-60	Out-Swing	Pad-Lockable	-	1
265075-00	Out-Swing	Non-Locking (Zinc Die Cast)	-	6
265076-50RD	Out-Swing	Inside Release w/ Plastic Grip	-	
26210010 RHG	Out-Swing	Inside Release w/ Roller Cam	-	7
2650-54RD	Out-Swing	Inside Release w/o Plastic Grip	-	8

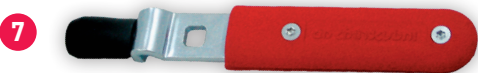
* Other grips available upon request
+ Available in Bulk and Individual packaging.



5
NON-LOCKING
OUT-SWING



6
NON-LOCKING
ZINC DIE CAST W/
BLACK POWDER COAT

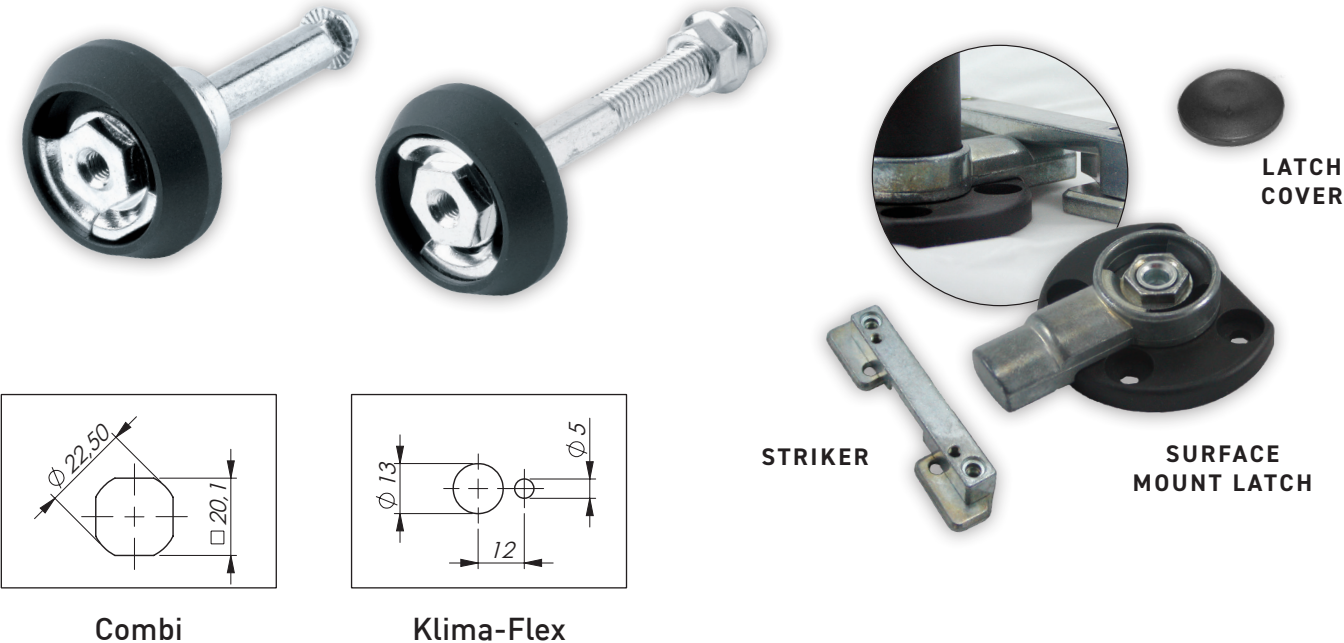


INSIDE RELEASE WITH OR WITHOUT ROLLER CAM

Handle: Steel, Zinc Plated and/or Red Polyamide (PA6)
Roller Cam: Glass Reinforced Nylon (PA6 GF30)



Klima-Flex™ latching mechanisms are available in “through door” and “surface mount” options. Common to all **Klima-Flex™** latching mechanisms is a ninety degree stop limitation, durable zinc die-cast construction, and the ability to be paired with any of our handles, cams, and accessories. This creates unprecedented reliability and design flexibility.



KLIMA-FLEX™ SYSTEM - INSIDE AND OUTSIDE HANDLES				
P/N	DESCRIPTION / MATERIAL	DOOR THICKNESS	CAM	PANEL PREP
265078-S25	8 mm Threaded Square / ZN	25 mm (1")	Adjustable	Klima-Flex
265078-S50	8 mm Threaded Square / ZN	50 mm (2")	Adjustable	Klima-Flex
265078-S75	8 mm Threaded Square / ZN	75 mm (3")	Adjustable	Klima-Flex
265078-S100	8 mm Threaded Square / ZN	100 mm (4")	Adjustable	Klima-Flex
265078-SC25	8 mm Threaded Square / ZN	Single Panel 1" Grip	Adjustable	Combi
265078-SC50	8 mm Threaded Square / ZN	Single Panel 2" Grip	Adjustable	Combi
265078-10	Fixed / Surface Mounted	Any Thickness	Adjustable Striker	Screw or Rivet
265078-301	Latch Cover for Multi-Point Latching			
265078-302	Latch Cover for Multi-Point Latching w/ Slot			

K1

CAMS, LINKAGES & ACCESSORIES

We offer a wide selection of cams, linkages and accessories to complete your **Klima-Flex™** latching system. Cams are available in a variety of configurations and provide the compression needed to keep a tight seal on HVAC enclosure doors. A safety catch is available to prevent accidents in out-swing door applications. Linkages, when used with rods, allow for multiple latching points. All cams, linkages and accessories are constructed from high grade materials resulting in industry leading reliability and durability.



KLIMA-FLEX™ - INSIDE LATCHING OPTIONS			
P/N	DESCRIPTION	ROLLER SIZE / LENGTH	IMAGE
231101.2	Roller Cam Single Point	0.708 dia x 1.74"	1
2321S07-R01-VTS	Roller Cam - Short	1.48 dia. x 1.75"	2
2321S07-R07	Roller Cam - Medium	1.18 dia. x 2.10"	
2321S07-R01	Roller Cam - Large	1.48 dia. x 2.30"	3
2321S07-R05	Roller Cam	0.69 dia. x 2.50"	
2321S07-R02	Rod Linkage w/ Pin	-	
265079-10	Rod Linkage for 8 mm Rod	-	4
23210025	Safety Catch	-	5

K2

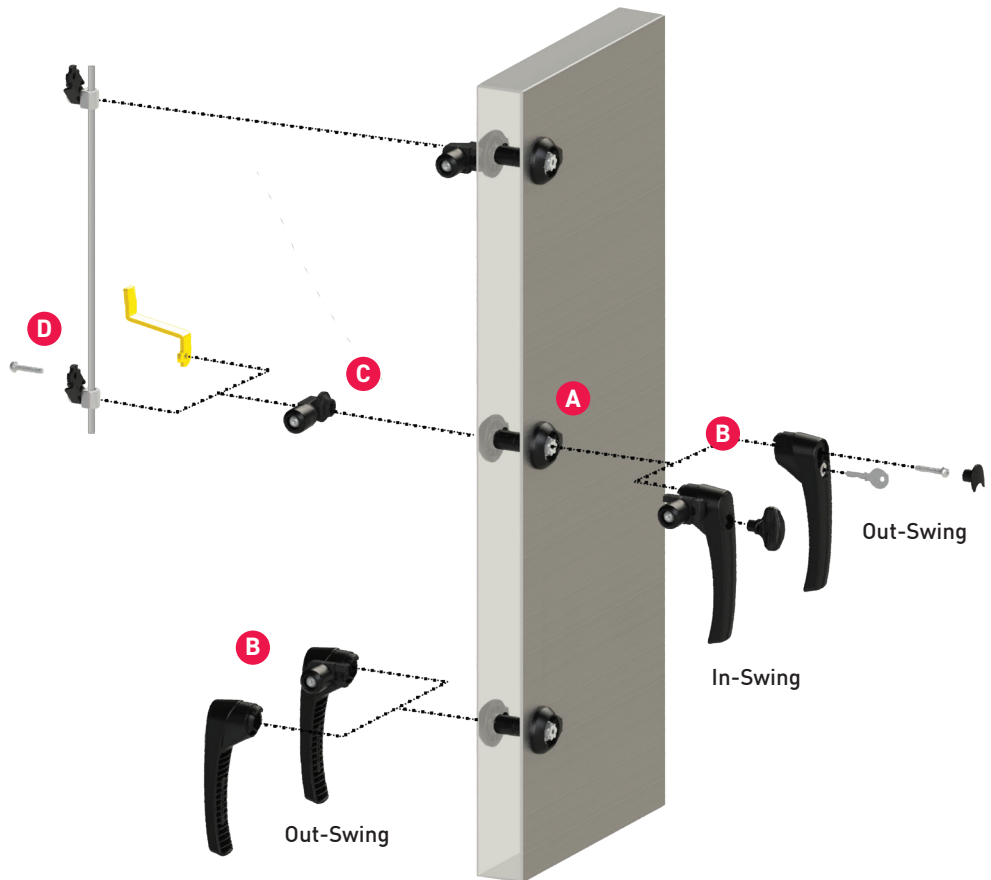
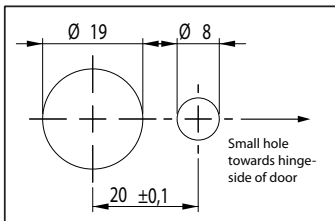
HOW TO BUILD A KLIMA-FLEX K2 LATCH

The patented K2 latching mechanism does not depend on the rigidity of the door, so it is highly recommended for fiberglass filled door panels. This feature eliminates possible over-compression that can lead to leaks. It is also slightly larger and has an integrated, pour in place gasket around the base. It is possible to mount a K2 handle on a K1 latching mechanism, but not vice versa.



- A** Basic latching unit
- B** Handle
- C** Cam
- D** Inside options

Panel Prep



IN-SWING DOOR

- A** Choose a latching unit corresponding to the thickness of the door.
- B** Choose an in-swing handle with integrated roller cam.
- C** If you need an inside security handle, mount a 2651-205400 handle on the inside of the door.

OUT-SWING DOOR

- A** Choose a latching unit corresponding to the thickness of the door.
- B** Choose an out-swing handle.
- C** Add a roller cam.
- D** If needed, choose inside options: rod link, safety catch, safety handle, inside handle.



HANDLES

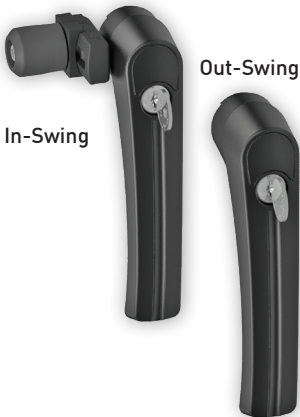


There are a variety of K2 handle combinations depending upon your application. Choose between key locking, tool operated, or non-locking. Designed for ease of installation in the factory or the field, the handles are mounted with a single screw. The in-swing handles have a built in, adjustable roller cam that reduces friction during the latching operation. The cam is interchangeable from left to right. Contact Allegis for **Klima-Flex™** K2 handles with the roller cam pre-mounted on the left side.

TOOL-OPERATED



KEY-LOCKING



NON-LOCKING



PAD-LOCKABLE



KLIMA-FLEX™ K2 SYSTEM - INSIDE AND OUTSIDE HANDLES					
P/N	DESCRIPTION	LATCHING TYPE	P/N	DESCRIPTION	LATCHING TYPE
2651-205000	In-Swing	Non-Locking	2651-225400	Out-Swing	Non-Locking
2651-205134	In-Swing	Recessed Hexagon 8 (5/16")	2651-205534	Out-Swing	Recessed Hexagon 8 (5/16")
2651-205281	In-Swing	Locking (Keyed: IL1333)	2651-205681	Out-Swing	Keyed: IL1333
			2651-225700	Out-Swing	Padlockable



MATERIAL

Handle: Glass Reinforced Nylon (PA6 GF30)
Roller Cam: Zinc Die Cast, Glass Reinforced Nylon (PA6 GF30)
* Contact ALLEGIS for more information about adding your logo to the handle plug and/or custom colored handles.
** Alternative keys and tools available upon request.





LATCHING MECHANISMS



The **Klima-Flex™ K2** latching technology allows for quick and easy mounting on double skinned doors. When the mounting screws (T-30 torx bit required) are turned, the expanding spacers are engaged and affix themselves to the skins from the inside of the door. The latch housing is designed so that parts can be attached to either side of the latching unit. A handle can be installed on the inside or outside, and rod links or a safety catch can be added without any changes to the latching unit. Handles can be replaced or added later without altering the integrity of the latching unit.



MATERIAL

- Escutcheons: Glass Reinforced Nylon (PA6 GF30)
- Shaft: Zinc Die Cast
- Expanding spacers: Glass Reinforced Nylon (PA6 GF30)
- O-Ring: Rubber



- 1 Mounted with a click; holds in place.
- 2 Screw from one side.
- 3 When mounting, the expanding spacers will flex outward, creating a stable system without deforming the door skins.

KLIMA-FLEX™ K2 - LATCH HOUSING	
P/N	DOOR THICKNESS
2651-101025	25 mm (1")
2651-101030	30 mm (1.2")
2651-101035	35 mm (1.4")
2651-101043	43 mm (1.7")
2651-101045	45 mm (1.77")
2651-101050	50 mm (2")
2651-101060	60 mm (2.4")
2651-101070	70 mm (2.75")
2651-101075	75 mm (3")
2651-101095	95 mm (3.7")
2651-101100	100 mm (4")

* Each latch will accommodate +/- 2.5 mm from the nominal thickness listed.

K2 SURFACE MOUNT LATCH



STRIKER

KLIMA-FLEX™ K2 SURFACE MOUNT LATCH		
P/N	HOUSING MATERIAL	CAM AND STRIKER MATERIAL
2651-6055130-000	Black PA6	Zinc / Zinc Plated
2651-6055160-000	Black PA6	Black Powder Coated Zinc



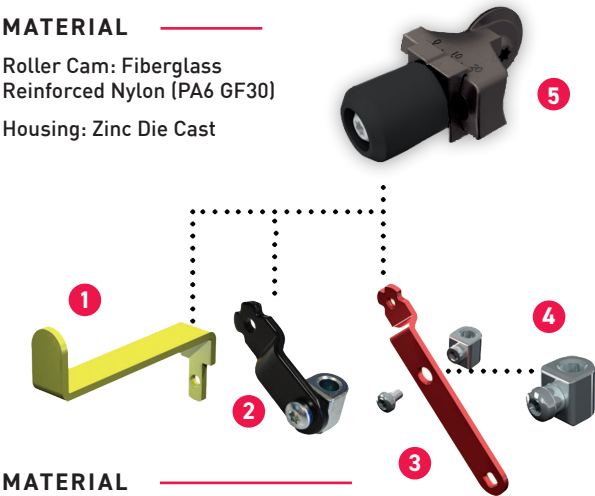
CAMS, LINKAGES & ACCESSORIES



In the **Klima-Flex™** K2 system you can combine different parts to achieve the latching system required. The roller cam reduces the friction during the latching operation. Choose from the list below.

KLIMA-FLEX™ K2 - INSIDE LATCHING OPTIONS		
P/N	DESCRIPTION	IMAGE
2651-901025	Safety catch for a 1" door	1
2651-901050	Safety catch for a 2" door	1
2651-901075	Safety catch for a 3" door	1
2651-901100	Safety catch for a 4" door	1
2651-902001	Rod link allows interlinking latch points w/o the use of inside safety handle	2
2651-904000	Inside security handle w/o rod link	3
2651-903001	Security handle w/ rod link	3 + 4
2651-903002	Rod link only; for inside handle	4
CAM 243	25 mm Ø of Roller	5

MATERIAL
Roller Cam: Fiberglass Reinforced Nylon (PA6 GF30)
Housing: Zinc Die Cast



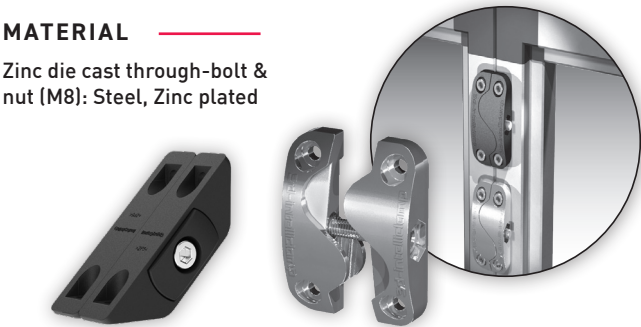
MATERIAL
Safety catch, rod link, inside security handle, and inside security handle with rod link: Steel, Zinc plated

3D-INTELICLAMP

3D-Intelliclamp™ is used for the connection of sections or units. The 3D-Intelliclamp™ will align separate units in X-, Y- and Z- axis as the through-bolt is tightened. Mounting is with rivets or screws. Each 3D-Intelliclamp™ consists of two interlocking halves, through-bolt and nut.

3D-INTELLICLAMP™ - UNIT CONNECTION		
P/N	DESCRIPTION	COATING
275015-01	3D-Intelliclamp 60 x 40 mm	Black Coated
275015-02	3D-Intelliclamp 60 x 40 mm	Zinc Plated
271634-01	3D-Intelliclamp 50 x 50 mm	Black Coated
271134-01	3D-Intelliclamp 50 x 50 mm	Zinc Plated
271140-01	3D-Intelliclamp Corner 100 x 50 mm	Zinc Plated
271640-01	3D-Intelliclamp Corner 100 x 50 mm	Black Coated

MATERIAL
Zinc die cast through-bolt & nut (M8): Steel, Zinc plated



COMPRESSION HINGE-LATCHES

The Hinge-Latch allows a panel or door to open left, right, or to be removed all together. The handle is first lifted, safely relieving any cabinet pressure, before a second action releases the door from the frame. The part provides 6 mm (.23") of compression upon closure. Vertical adjustment, together with a guiding feature between the door and frame, help create a tight seal around the entire opening. The Hinge-Latch is available in two sizes.



COMPACT COMPRESSION HINGE-LATCH

COMPACT COMPRESSION HINGE-LATCH w/ SAFETY CATCH

P/N	DESCRIPTION	LATCHING
2651-420034	Recessed Hexagon 8	with Safety Catch
2651-430034	Recessed Hexagon 8	without Safety Catch

MATERIAL

Door Part, Handle, Frame Part, Mounting Bracket, Insert, Safety Catch, and Adjustable Off-Set: Fiber Glass Polyamide (PA6 GF30)

COMPRESSION HINGE-LATCH 2.0



COMPRESSION HINGE-LATCH 2.0

P/N	DESCRIPTION	LATCHING
2651-440080-00	Keyed IL 101	without bracket
2651-440000-00	Non-Locking	without bracket
2651-440035-00	Recessed Hexagon 10	without bracket
265141-606044	Mounting Bracket	-

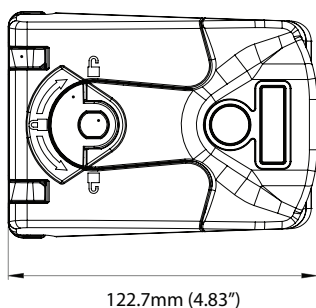
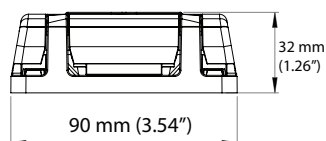
* Latches with **Offsets** available upon request.

MATERIAL

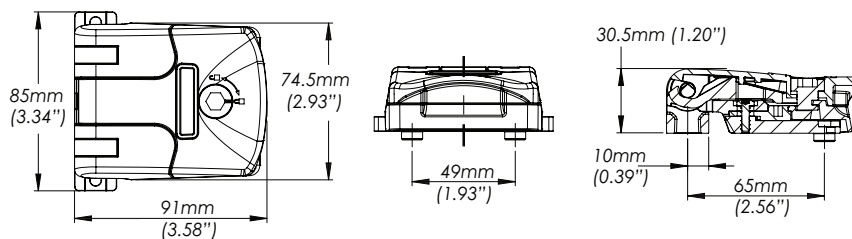
Door Part and Handle: Fiber Glass Polyamide (PA6 GF30)

Hinge Pins: Stainless Steel

Frame Part and Latching Cam: Zinc Die Cast



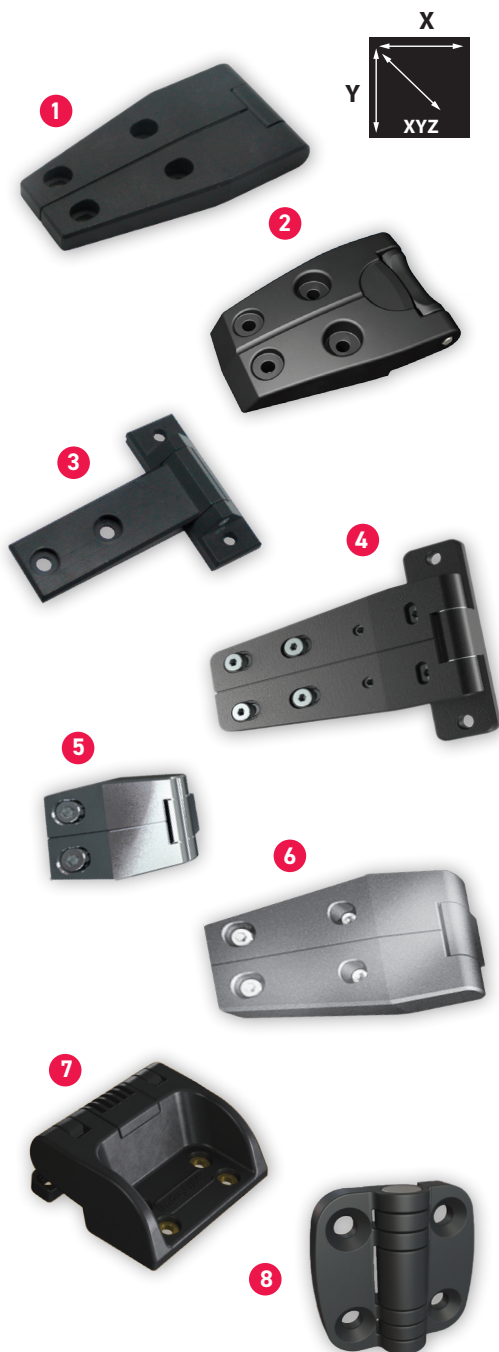
COMPACT COMPRESSION HINGE-LATCH



Custom options include: Logos applied to the top of the handle, tooled inserts, unique colors, and additional offsets between the door and frame piece.

HINGES

The **Klima-Flex™** hinges have been designed specifically for the HVAC industry. The pivot point has been moved back to allow a door to close flat on the frame gasket. Other design features include adjustability along the X-, Y- and Z- axis and the ability for the door to be removed with a lift-off design.



KLIMA-FLEX™ and KLIMA-FLEX™ K2 - HINGES

P/N	FIXED	ADJ. AXIS	WIDTH	LENGTH	MATERIAL FINISH	IMAGE
321650	No	x, y	1.57"	2.4"	Zinc Black Powder Coat	Not Shown
321651	No	x, y	1.96"	3.74"	Zinc Black Powder Coat	1
321652	No	x, y	2.75"	5.23"	Zinc Black Powder Coat	1
321129	Yes	x, y	2.95"	3.15"	Zinc Plated	3
321629	Yes	x, y	2.95"	3.15"	Zinc Black Powder Coat	3
325070	Yes	none	2.56"	3.88"	Black PA6	2
321658	No	x, y, z	4"	4.98"	Zinc Black Powder Coat	4
321158	No	x, y, z	4"	4.98"	Zinc Plated	4
323050	No	x, y, z	1.57"	2.40"	Stainless Steel	5
323051	No	x, y, z	1.96"	3.74"	Stainless Steel	6
323052	No	x, y, z	2.75"	5.23"	Stainless Steel	6
2651-510050	No	y	3"	3.54"	Black PA6	7

AC-XYZ	Yes	x, y, z	3.54"	4.50"	Zinc	Not Shown
--------	-----	---------	-------	-------	------	-----------

P/N	FIXED	FRICTION	WIDTH	LENGTH	FINISH	IMAGE
3216-800504-050	Yes	0.50 NM Torque	1.97"	1.97"	Zinc Black Powder Coat	8
3216-800504-075	Yes	0.75 NM Torque	1.97"	1.97"	Zinc Black Powder Coat	8
3216-800504-100	Yes	1.00 NM Torque	1.97"	1.97"	Zinc Black Powder Coat	8
3216-800504-125	Yes	1.25 NM Torque	1.97"	1.97"	Zinc Black Powder Coat	8
3216-800504-150	Yes	1.50 NM Torque	1.97"	1.97"	Zinc Black Powder Coat	8

ACCESSORIES

Circular and square inspection windows are transparent and constructed from impact-resistant polycarbonate. Windows are sealed with an integrated pour-in-place gasket. The window is supplied as two halves (circular) or four pieces (square) that are assembled in the door. Simple mounting using the supplied six M6 x 60 mm Stainless bolts from one side and corresponding nuts on the other half (circular) or self-tapping Stainless screws from one side only (square/rectangle).

CIRCULAR INSPECTION WINDOW

P/N	DESCRIPTION	DOOR THICKNESS
506001-48	Circular inspection window 223 mm Ø	48 - 52 mm (1.89 - 2.05")
2650-VHBVP-XXX	3M™ VHB Self Adhesive	Various

* XXX represents door thickness



MATERIALS

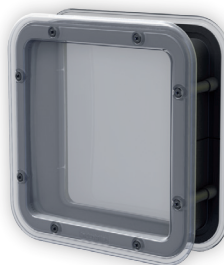
Windows: Polycarbonate
Spacer: Black ABS
Sealing: EPDM
Screws: 304 SS

SQUARE INSPECTION WINDOW

P/N	DIMENSIONS	DOOR THICKNESS
506002-40	8.78 x 8.78"	38 - 42 mm (1.50 - 1.65")
506002-50	8.78 x 8.78"	48 - 52 mm (1.89 - 2.05")
506002-60	8.78 x 8.78"	58 - 62 mm (2.28 - 2.44")

MATERIALS

Windows: Polycarbonate Makrolon
Adhesive: 5962 3M™ VHB™
Beauty Band: Polystyrene



MATERIALS

Windows: Polycarbonate
Spacer: Black ABS
Sealing: EPDM
Screws: 304 SS

TEST PORT

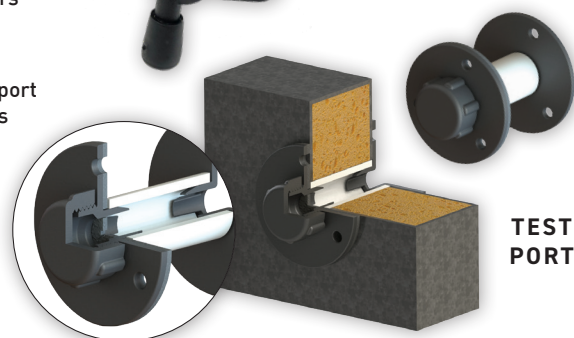
P/N	DESCRIPTION
2651-TP2	Assembly with 2" Tubing
2651-TP3	Assembly with 3" Tubing
2651-TP4	Assembly with 4" Tubing
DUMB0.0000	Nylon Pressure Test Outlet

KEY BENEFITS

- Made for insulated, two panel doors
- Plastic material provides a thermal break
- Variable length tubing means the port does not depend on door thickness
- Gasketed to prevent leaks
- Easy open/easy close cap
- Low cost
- Low profile



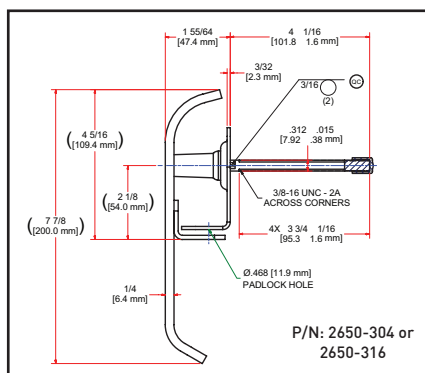
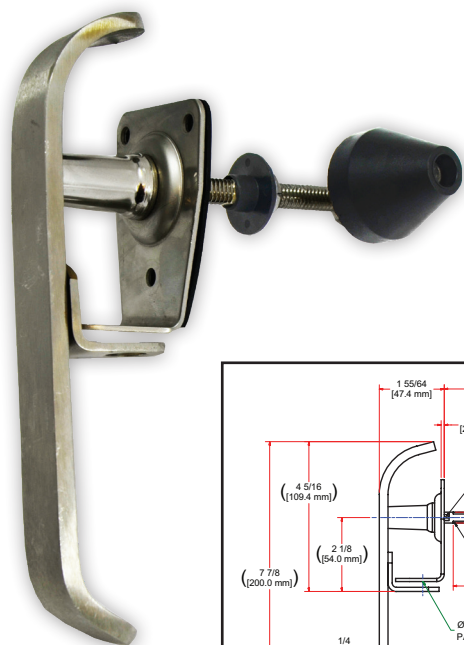
TEST OUTLET



TEST PORT

STAINLESS STEEL LATCHING

For corrosive environments, Allegis has developed a line of both 304 and 316 series Stainless Steel hardware, suitable for installation in thick panel HVAC doors. Based on requirements, just the exterior components can be Stainless Steel, or all components can be supplied in Stainless Steel.



304 STAINLESS STEEL SOLUTIONS

	P/N	DESCRIPTION
HANDLES	*2650-304	304 SS Handle + Hardware
CAM OPTIONS	233009-U	304 SS Straight Cam 45 mm Long
	CAM 268	304 SS Bracket, Axle & Plastic Roller
ACCESSORIES	23300025	304 SS Safety Catch
	265076-50 SS	304 SS Inside Release Handle (optional)
	263079-10	304 SS Rod Linkage for 8 mm Rod

316 STAINLESS STEEL SOLUTIONS

	P/N	DESCRIPTION
HANDLES	*2650-316	316 SS Handle + Hardware
	265076-5001 T316	316 SS Inside Release Handle (optional)
CAM OPTIONS	239014-U	316 SS Straight Cam, 45 mm Long
	CAM 283	316 SS Bracket, Axle & Plastic Roller
	CAM 287	316 SS Bracket, Axle & Machined Roller

* Hardware includes: Plastic bushing, jam nut & lock nut. (Cam not included)



PRO-FIT SEALING PROFILES

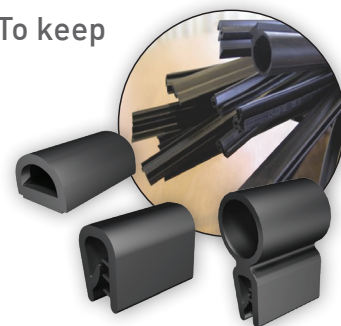
We provide a variety of extruded sealing profiles, flat sponge rubber, and custom formed profiles to complement our line of **Klima-Flex™** handles, latches, and hinges. To keep the environment out and look to professional sealing solutions that fit.

MATERIAL

- Natural Rubber (NR)
- Ethylene-Propylene-Diene Monomer (EPDM)
- Polychloroprene (CR)
- Nitrile Rubber (NBR)

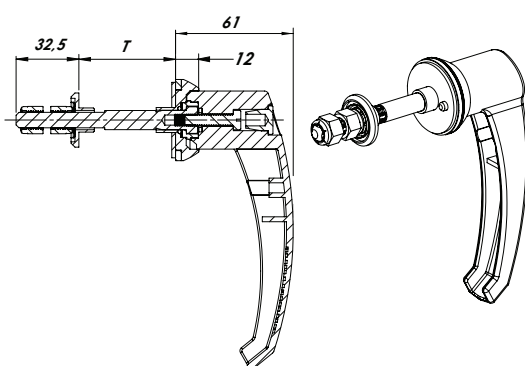
PRO-FIT SOLUTIONS

- Sealing profiles
- Rubber profiles
- Edge protection profiles
- Glazing and slip on profiles
- Sponge rubber profiles with or without acrylic adhesive

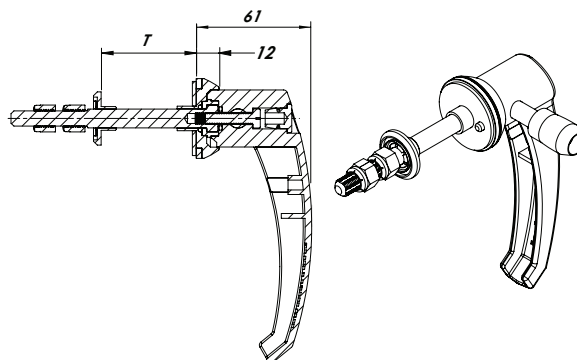


The **Klimaflex™** Stainless Steel handle and latch are cast from 316 Stainless Steel. They offer a corrosion resistant solution for the harshest of environments. Suitable for off and near shore applications, pharmaceutical, chemical processing, and situations where wash-downs are required. The latch uses the same hole preparation as other members of the K1 family and is available with an optional padlock hasp.

LATCH ASSEMBLY OUT-SWING - NON-LOCKING



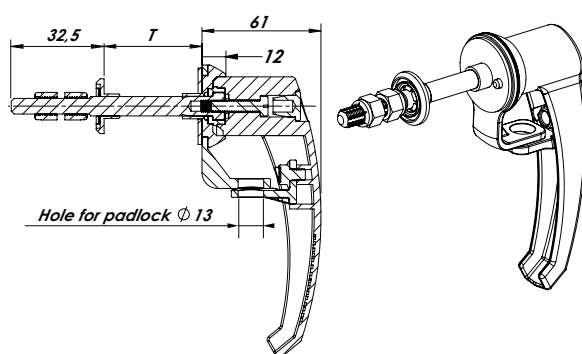
LATCH ASSEMBLY IN-SWING - NON-LOCKING



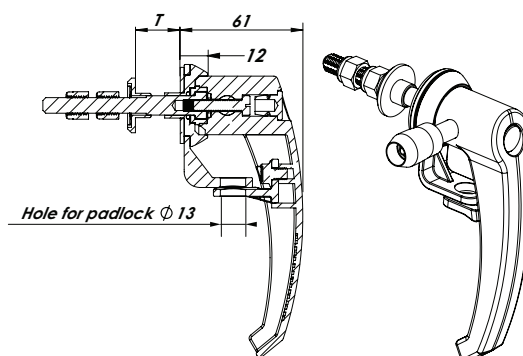
		OUT-SWING NON-LOCKING	IN-SWING NON-LOCKING	OUT-SWING PAD-LOCKABLE	IN-SWING PAD-LOCKABLE	LATCH ONLY NON-LOCKING
PANEL THICKNESS = T	MATERIAL	P/N	P/N	P/N	P/N	P/N
25 mm	Acid Proof 316	2690-00-G9-025	2690-10-G9-025	2690-60-G9-025	* 8-325-418-025	2690-422-025
50 mm	Acid Proof 316	2690-00-G9-050	2690-10-G9-050	2690-60-G9-050	* 8-325-418-050	2690-422-050
75 mm	Acid Proof 316	2690-00-G9-075	2690-10-G9-075	2690-60-G9-075	* 8-325-418-075	2690-422-075
100 mm	Acid Proof 316	2690-00-G9-100	2690-10-G9-100	2690-60-G9-100	* 8-325-418-100	2690-422-100
-	Acid Proof 316	269076-00	Non-Locking Handle Only - Latching Sold Separately			

* Roller will collide with Pad-Lock bracket, which might impede door opening. {Please check fit}

LATCH ASSEMBLY OUT SWING - PAD-LOCKABLE



LATCH ASSEMBLY IN SWING - PAD-LOCKABLE





CALL US AT 866.378.7550

VISIT ALLEGISCORP.COM

OR EMAIL US AT ACCESSBETTERTHINKING@ALLEGISCORP.COM